

GENERAL FEATURES

- **Long Service Life** - Thick plate design and efficient gas recombination yield a service life expectancy of up to 10 years in standby mode.
- **Low Internal Resistance** - Superb high-rate discharge characteristics ensure reliable performance in UPS and Telecom applications.
- **Maintenance-Free, Non-Spillable** - Proven VRLA technology guarantees safe operation without maintenance and 'non- restricted article' status for transportation.
- **Low Self-Discharge** - Lead-calcium alloy grids and use of high purity lead account for superior shelf-life characteristics permitting storage for extended periods of time.
- **Designed-In Reliability** - Cutting-edge manufacturing and process control combined with meticulous quality assurance procedures guarantee consistent and dependable performance

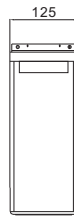
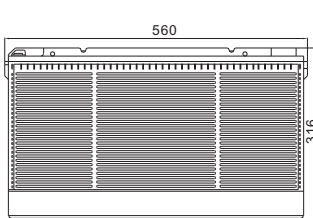
PERFORMANCE SPECIFICATIONS

Nominal Voltage	12V(6 cells)	
Design Floating Life @25°C	12 Years	
Nominal Capacity @25°C	20 hour rate 9.0A to 10.50V	180.0Ah
	10 hour rate 15.6A to 10.50V	156.0Ah
	5 hour rate 27.3A to 10.50V	136.5Ah
	3 hour rate 41.0A to 9.60V	123.0Ah
Internal Resistance	1 hour rate 100.6A to 9.60V	100.6Ah
	Full Charged Battery@25°C	<5.0mΩ
Energy Density (20-hr. rate)	97.65W-h/l	
Specific Energy (20-hr. rate)	41.54W-h/kg	
Shelf Life (nominal capacity at 20°C)	1 Month	97%
	3 Months	91%
	6 Months	83%
Max Short-Duration Discharge Current	5 Sec	1800A
Standby Use Charge (Constant Voltage) @25°C	Initial Charging Current Less than 36A Voltage 13.6 - 13.8V	
	Initial Charging Current Less than 36A Voltage 14.4 - 14.9V	
Cycle Use Charge (Constant Voltage) @25°C	Initial Charging Current Less than 36A Voltage 14.4 - 14.9V	
	Charge	-20°C to 50°C
Operating Temperature Range	Discharge	-40°C to 60°C

GENERAL FEATURES mm

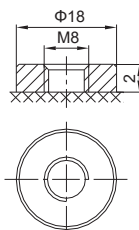
Unit: mm

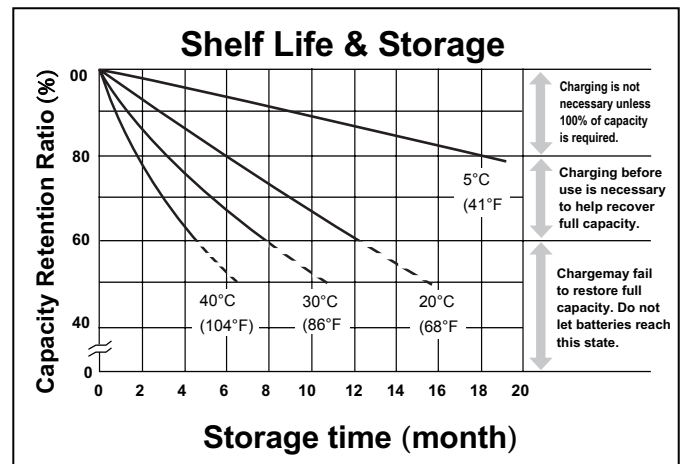
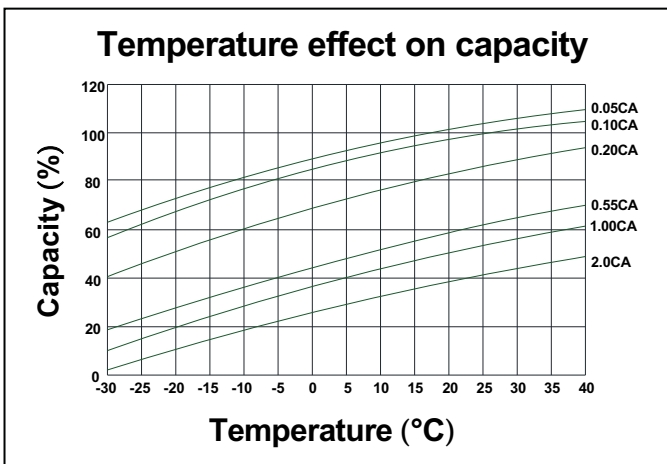
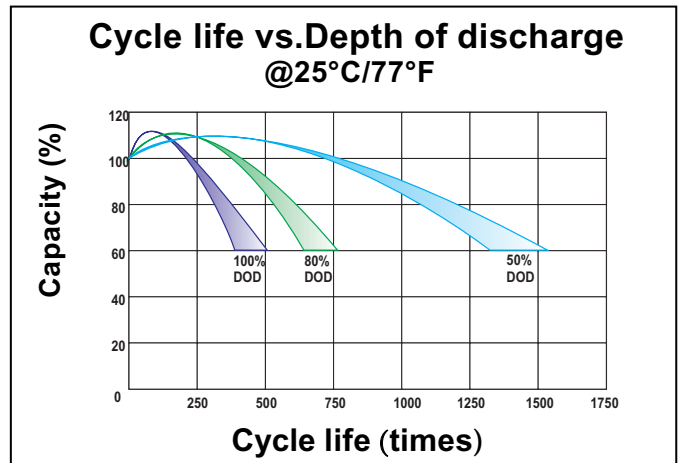
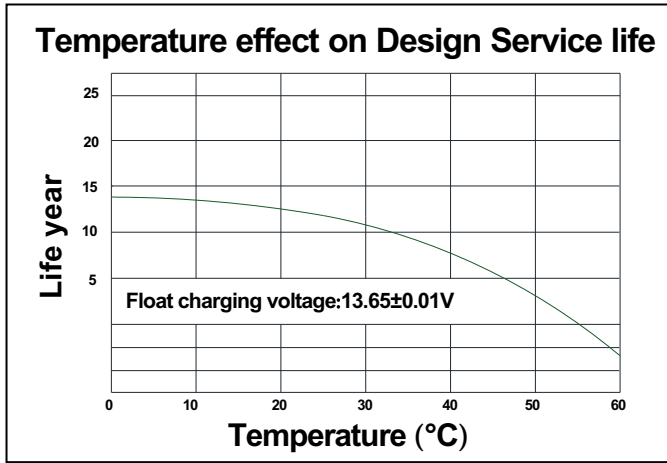
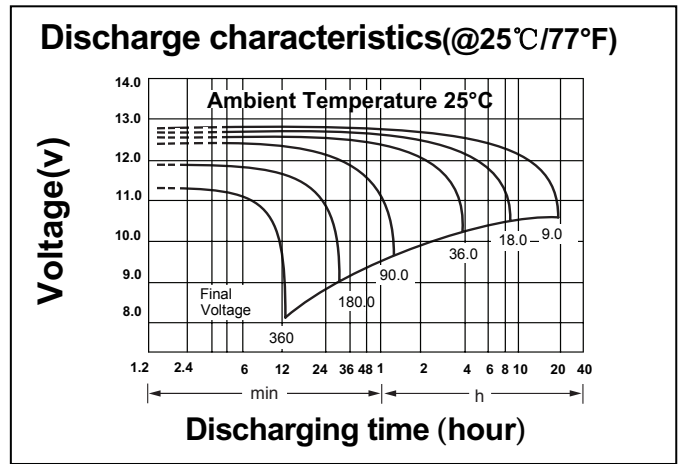
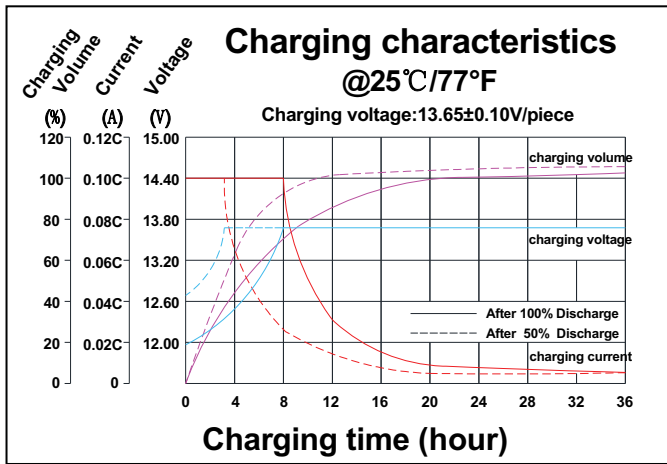
Length	560±1	Total Height	316±1
Width	125±1	Weight(kg)	52.0±1
Height	316±1		



TERMINALS mm

F9 Terminal





CONSTANT CURRENT DISCHARGE RATINGS (Amperes at 25°C)

F.V/Time	15MIN	30MIN	1HR	2HR	3HR	4HR	5HR	8HR	10HR	20HR
1.60V	246.3	165.0	100.6	60.2	41.6	34.1	27.9	19.2	16.3	9.90
1.65V	241.2	163.6	100.2	59.8	41.5	33.9	27.8	19.1	16.1	9.54
1.70V	237.4	162.6	99.2	59.3	41.1	33.8	27.6	18.9	15.9	9.27
1.75V	228.7	160.1	98.3	58.8	41.0	33.5	27.3	18.8	15.8	9.00
1.80V	213.3	154.5	96.0	57.8	39.9	32.7	26.8	18.4	15.6	8.46
1.85V	193.5	146.1	91.2	55.2	38.1	31.1	25.6	17.7	15.2	8.10