



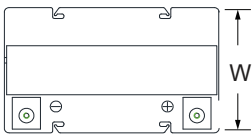
### GENERAL FEATURES

- **GEL Technology** - DG batteries comes from the internationally superior Gel technology. It is ideal for standby or frequent cyclic discharge applications under extreme environments.
- **Long Life Time** - By using strong grids, high purity lead and patented Gel electrolyte, the DGseries offers excellent recovery after deep discharge under frequent cyclic discharge use, and can deliver 400 cycles at 100% DOD.
- **Maintenance-Free, Non-Spillable** - Proven VRLA technology guarantees safe operation without maintenance and 'non- restricted article' status for transportation.
- **Excellent Recovery from Deep Cycle** - Unique technical processes are used into the grid alloy and electrolyte additive, in this case the battery can be recharged after being over-discharged.
- **Designed-In Reliability** - Cutting-edge manufacturing and process control combined with meticulous quality assurance procedures guarantee consistent and dependable performance

### PERFORMANCE SPECIFICATIONS

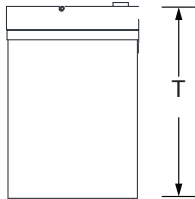
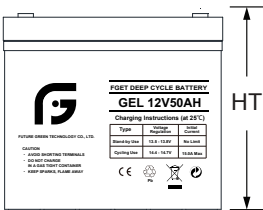
<b>Nominal Voltage</b>	12V(6 cells)	
<b>Design Floating Life @25°C</b>	12 Years	
<b>Nominal Capacity @25°C</b>	20 hour rate 2.50A to 10.50V	50.00Ah
	10 hour rate 4.88A to 0.50V	48.80Ah
	5 hour rate 8.56A to 10.20V	42.80Ah
	3 hour rate 13.01A to 9.90V	39.03Ah
<b>Internal Resistance</b>	1 hour rate 30.31A to 9.60V	30.31Ah
	Full Charged Battery@25°C	<7.0mΩ
<b>Energy Density (20-hr. rate)</b>	88.33W-h/l	
<b>Specific Energy (20-hr. rate)</b>	37.50W-h/kg	
<b>Shelf Life (nominal capacity at 20°C)</b>	1 Month	97%
	3 Months	91%
	6 Months	83%
<b>Max.Discharge Current@25°C</b>	7 Min.	165.0A
<b>Max Short-Duration Discharge Current</b>	10 Sec	410.0A
<b>Standby Use Charge (Constant Voltage) @25°C</b>	Initial Charging Current Less than 15A Voltage 13.6-13.8V	
	Cycle Use Charge (Constant Voltage) @25°C Initial Charging Current Less than 15A Voltage 14.6-14.8 V	
<b>Operating Temperature Range</b>	Charge	0°C to 50°C
	Discharge	-20°C to 60°C

### GENERAL FEATURES mm



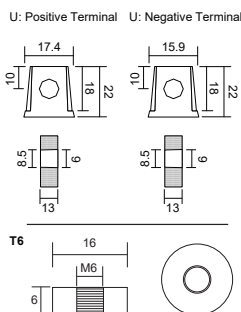
Unit: mm

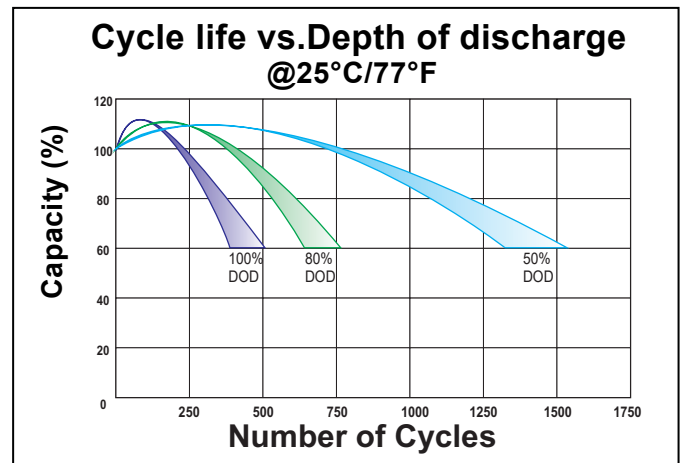
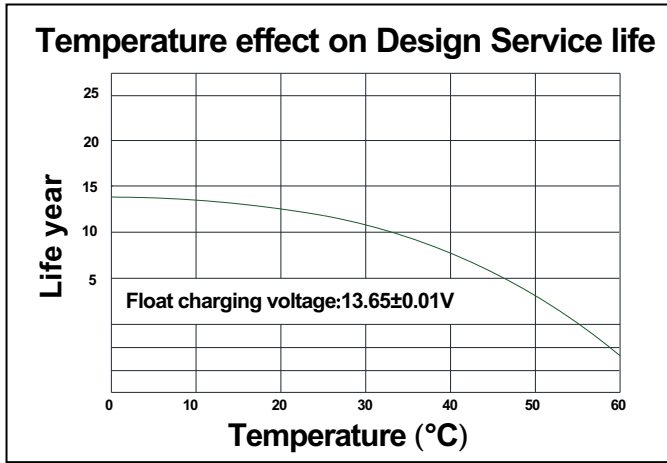
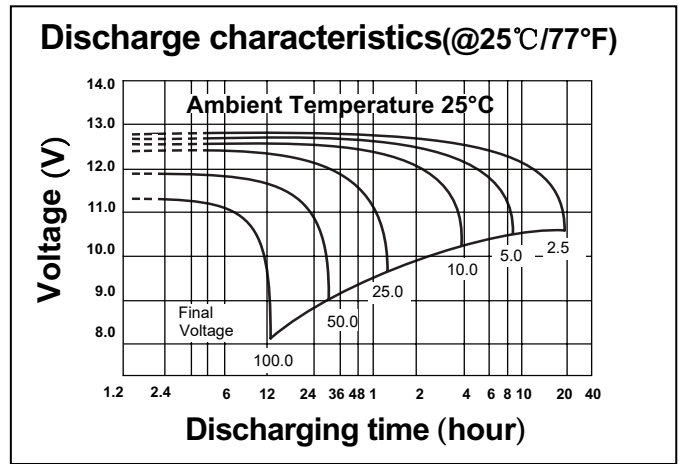
Length	230±1
Width	138±1
Height	207±1
Total Height	214±1
Weight(kg)	16.0±3%



### TERMINALS mm

- U: Universal terminals: Heavy-duty posts with 'nut & bolt' fasteners
- T6: Threaded insert w. 6 mm stud fastener





**CONSTANT CURRENT DISCHARGE RATINGS (Amperes at 25°C)**

F.V/Time	5MIN	10MIN	15MIN	30MIN	1HR	2HR	3HR	4HR	5HR	8HR	10HR	20HR
9.60V	166.5	122.5	91.42	52.45	30.31	17.75	13.21	10.46	8.82	6.02	5.10	2.60
10.0V	160.4	118.4	88.68	51.35	29.73	17.45	13.01	10.32	8.71	5.95	5.05	2.57
10.2V	152.3	113.1	85.09	49.89	28.97	17.04	12.74	10.13	8.56	5.86	4.98	2.54
10.5V	141.7	106.0	80.27	47.91	27.94	16.50	12.37	9.86	8.36	5.74	4.88	2.50
10.8V	127.5	96.4	73.76	45.20	26.51	15.74	11.86	9.50	8.08	5.56	4.75	2.44
11.1V	108.4	83.41	64.80	41.35	24.48	14.65	11.12	8.97	7.68	5.31	4.56	2.35